

Facts and Figures about Ewelme

David Solomon

The data presented in this report are taken from a number of sources, predominantly the Census of 2011 and earlier years, and a report entitled “Community profile for Ewelme” prepared by ACRE in 2013. Where data from this latter source are presented in tables the original source is cited so that the date of collection/calculation can be seen.

There are some minor inconsistencies in the data set, mainly due to the ACRE report rounding figures to the nearest five. However, this does not affect the overall picture to any significant extent. Where percentage figures are presented, these are of the relevant sample rather than for the whole population; for example, the percentages of people in various employments are as a proportion of the working-age population ie 16-65.

Some of the figures are likely to be heavily affected by the MOD employees and their families associated with RAF Benson. For example, the high proportion of employees travelling 2 km or less to work is likely to predominantly reflect this group. Those statistics that are likely to be thus affected are noted in the tables.

Table 1. Population and household categories.

Subject	Ewelme	England	Source, date and notes (a)
Total	1048	49.1 x 10 ⁶	
Density per ha	0.91	4.1	Census 2001
Under 16	260 (24.8%)	18.9%	
Working age, 16-64	640 (61.0%)	64.7%	
65+	149 (14.2%)	16.3%	
One-person households	63 (7.2%)	17.9%	
Married households	237 (61.2%)	33.2%	
Co-habiting households	18 (4.7%)	9.8%	
Lone-parent households with dependent children	5 (1.3%)	7.1%	
Pensioner-only households	78 (20.8%)	20.7%	
Student households	0 (0%)	0.6%	
Other households	(5.2%)	10.6%	
Single pensioner households	35 (9.0%)	12.4%	

Notes on Table 1.

a) data from 2011 census unless otherwise stated

Table 2. Housing and occupancy

Subject	Ewelme	England	Source, date and notes (a)
All households	387		
Average occupancy	2.73		(b)
Detached houses	142 (33.7%)	22.3%	
Semi-detached	223 (53.0%)	30.7%	
Terraced houses	41 (9.7%)	24.5%	
Flats (purpose built)	10 (2.4%)	16.7%	
Flats (other)	5 (1.2%)	5.4%	
Caravan/other temporary	0 (0%)	0.4%	
Owner-occupied	179 (46.3%)	64.1%	
Social rented	34 (8.8%)	17.7%	
Private rented	37 (9.6%)	15.4%	
Other rented	137 (35.4%)	2.8%	*
Exc other rented (Owner occupied)	(71.6%)	65.9%	(c)
Exc other rented (Social rented)	(13.6%)	18.2%	(c)
Exc other rented (Private rented)	(14.8%)	15.8%	(c)
One-person households	(7.2%)	17.9%	
Married households	(61.2%)	33.2%	
Co-habiting households	(4.7%)	9.8%	
Lone-parent households	(1.3%)	7.1%	
Pensioner households	(20.8%)	20.7%	
Student households	(0%)	0.6%	
Other households	(5.2%)	10.6%	
Median price, detached	£401,500	£320,268	Land Registry, 2009
Median price, semi	£248,500	£211,043	Land Registry, 2009
Median price, terrace	£266,000	£174,653	Land Registry, 2009
Median price, flats	£167,500	£131,110	Land Registry, 2009
Affordability ratio	16.2	15.4	(d)
Council Tax Band A	(1.4%)	24.8%	Valuation Office Agency 2011
Council Tax Band B	(2.7%)	19.6%	“
Council Tax Band C	(52.9%)	21.8%	“
Council Tax Band D	(10.9%)	15.3%	“
Council Tax Band E	(12.8%)	7.9%	“
Council Tax Band F	(10.1%)	5.0%	“
Council Tax Band G	(7.9%)	3.5%	“
Council Tax Band H	(1.6%)	0.6%	“

Notes on Table 2.

a) data from 2011 census unless otherwise stated

b) Total population divided by number of houses

c) Percentage of housing stock excluding “other rented”, which in the case of Ewelme are likely to be overwhelmingly MOD.

d) Median house price divided by median household income.

Table 3. Economic and social data.

Subject	Ewelme	England	Source, date and notes (a)
Weekly household earnings (total)	£1060	£876	ONS 2008
Ditto after housing costs	£570	£423	“ *
DWP benefit claimants (working age)	18 (2.8%)	13.9%	DWP August 2012
Housing and CT claimants	16 (4.1%)	20.6%	DWP 2005
Income support claimants	3 (0.5%)	3.2%	DWP Aug 2012
Pension credit claimants	5 (3.4%)	24.4%	“
Index of multiple deprivation, least deprived decile	695 (60.2%)	10.0%	2010
2 nd decile	460 (39.8%)	10.0%	“
Deciles 3-10	0 (0%)	80%	“
Health deprivation decile 1	1155 (100%)	10%	“
Health deprivation deciles 2-10	0 (0%)	90%	“
Overcrowded households	6 (1.6%)	8.7%	

Notes on Table 3.

a) data from 2011 census unless otherwise stated

Table 4. Employment data

Subject	Ewelme	England	Source, date and notes (a)
Working-age adults (16-64)	640 (61%)	64.7%	
Of which economically active	558 (77.9%)	69.9%	
Employment type			
Full-time employees	356 (49.7%)	38.6%	(b)
Part-time employees	95 (13.3%)	13.7%	(b)
Self-employed	75 (10.5%)	9.8%	(b)
Work from home	40 (5.6%)	3.5%	(b)
Public sector employees	295 (54.2%)	28.2%	(b)
Receiving out of work benefits	7 (1.1%)	9.8%	DWP August 2012
Three largest work sectors			
Public sector/defence	180 (33.0%)		(b)
Education	60 (11%)		(b)
Health/social work	50 (9%)		(b)
Occupation			
Managerial	115 (21.4%)	12.0%	(b)
Professional or associated	215 (39.9%)	30.3%	(b)
Admin/secretarial	45 (8.5%)	11.5%	(b)
Skilled trades	55 (10.0%)	11.4%	(b)
Elementary occupations	40 (7.4%)	11.1%	(b)
Over 16's with degree equiv.	375 (47.8%)	27.4%	

Notes on Table 4.

a) data from 2011 census unless otherwise stated

b) percentages are of working-age adults

Table 5. Transport and travel (PT = public transport)

Subject	Ewelme	England	Source, date and notes (a)
Transport			
Households with no car	30 (7.2%)	25.8%	
Households with one car	150 (38.5%)	42.2%	
Households with 2 cars	160 (41.1%)	24.7%	
Households with 3 cars	30 (7.5%)	5.5%	
Households with 4 or more cars	20 (5.7%)	1.9%	
Total number of cars	650		(b)
Working from home	40 (5.6%)	3.5%	
Travel 2 km or less	355 (52.4%)	20.0%	Census 2001*
Travel 2-5 km	40 (6.2%)	20.1%	“
Travel 5-10	20 (3.1%)	18.3%	“
Travel 10-20	80 (11.7%)	15.2%	“
Travel 20-30	40 (5.9%)	5.3%	“
Travel 30-40	10 (1.8%)	2.4%	“
Travel 40-60	20 (3.1%)	2.2%	“
Travel more than 60 km	20 (2.7%)	2.7%	“
Travel to work by PT	25 (3.5%)	11.0%	
Travel times by walking/PT (distance)			
			DfT 2011, CRC 2010
To nearest hospital	89 min	58 min	
To nearest supermarket	24 min	10 min	“
To nearest town centre	26 min	18 min	“
To nearest GP	27 min (3km)	10 min (1.2 km)	“
To nearest primary school	15 min	9 min	“
To nearest secondary school	28 min (5 km)	15 min (2.1 km)	“
To nearest Post Office	(3 km)	(1 km)	“
To nearest Public House	(1.1 km)	(0.7 km)	“
To nearest Job Centre	(14.2 km)	(4.6 km)	“

Notes on Table 5.

a) data from 2011 census unless otherwise stated

b) based on assumption that households with four or more cars have an average of 4.5.

Trends in population and housing.

Data for population and numbers of house/households are available from each of the censuses every ten years from 1841 onwards (there was no census in 1941). Some of the numbers may not be strictly comparable for, inter alia, the following reasons:-

- The parish boundaries have changed at various times in the past.
- Early censuses counted houses, later ones households; for the years when both are available there are some minor differences.

- In the 2011 census the count is of people normally resident, even if they were away on the day of the census. For earlier years the count is of people actually present on the day, including visitors.

However, it is thought that these minor differences do not significantly distort the picture.

Table 6. Time series of populations and households, Ewelme Parish

Year	Population	Houses/households
1831	619	120
1841	663	140
1851	673	161
1861		
1871		
1881	602	163
1891	521	144
1901	473	136
1911	479	128
1921	426	121
1931	447	132
1951	471	154
1961	542	177
1971		
1981		
1991		
2001	1105	389
2011	1048	385

Notes on Table 6.

Data for 1911- 1991 are not available on line but can probably be obtained from paper copies of the census reports.

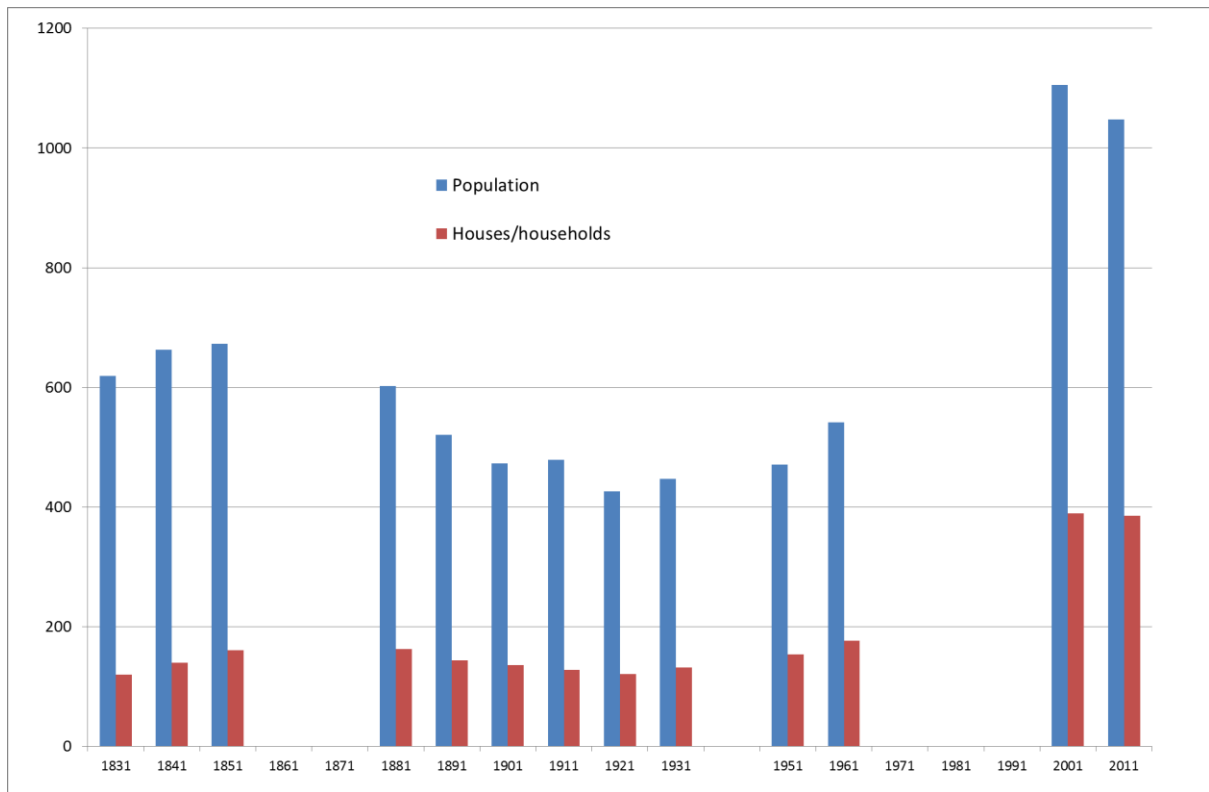


Figure 1. Trends in population and numbers of households. Data from Table 6.

Trends in age composition

Age breakdown of the local population is available from recent censuses.

Table 7. Trends in households and age structure of population, 1981-2011

Factor	1981	1991	2001	2011
Number of households			389	387
Number of one-person households			59	63
Number of households all over 65			67	73
Number of households with dependent children			171	166
Population (a)			1105	1048
Under 18			336	288
18-29			89	94
65 and over			109	149
75 and over			59	66

Notes on Table 7

Data for 1981 and 1991 not available on line but can probably be obtained from paper copies of the census reports.